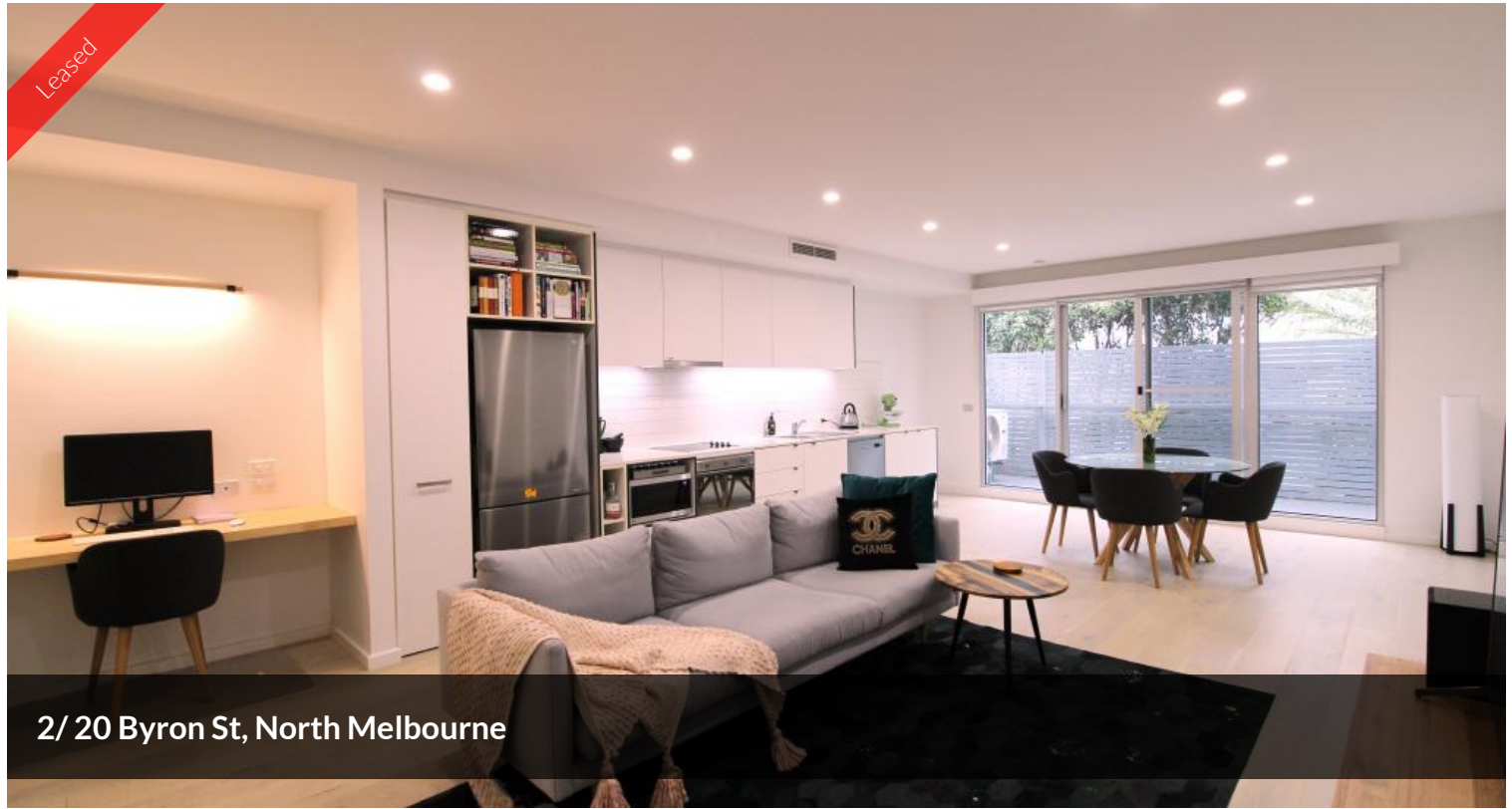
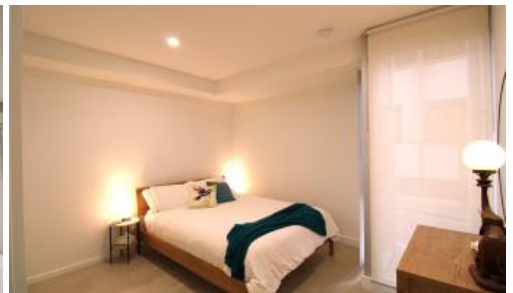


Leased



2/ 20 Byron St, North Melbourne



## FANTASTIC SPACIOUS APARTMENT WITH STORAGE CAGE

Enjoying a brilliant northern orientation in the iconic Rothe Lowman designed boutique block, this larger than usual apartment provides secure and substantial contemporary living in a low maintenance setting. Expansive open plan living areas to accommodate separate living and dining zones, adjoined by a kitchen with greater storage and bench space than you initially think, stone benchtops, full pull out pantry and dishwasher. A central bathroom separates the zones of living and sleeping and includes a European laundry. The main bedroom boasts floor to ceiling windows and built in robes. Stunning timber oak flooring flows throughout this home. Year round comfort is assured with central heating and cooling, full width north facing terrace, Study nook ideal for working from home arrangements as well as secure basement parking, storage cage and full security. Superbly positioned moments from Errol and Queensberry St shops and cafes, a stones throw from the major hospitals, Queen Victoria Market and Melbourne University.

The above information provided has been furnished to us by the vendor/s. We have not verified whether or not that information is accurate and do not have any belief in one way or the other in its accuracy. We do not accept any responsibility to any person for its accuracy and do no more than pass it on. All interested parties should make and rely upon their own inquiries in order to determine whether or not this information is in fact accurate.

 1  1  1

<b>Price</b>	\$400 Per Week
<b>Property Type</b>	Rental
<b>Property ID</b>	481

### AGENT DETAILS

Tara Hore - 0458 440 558

### OFFICE DETAILS

Melbourne  
P O Box 33197 Melbourne VIC 3004  
Australia  
0458 440 558



**TLH**  
Real Estate