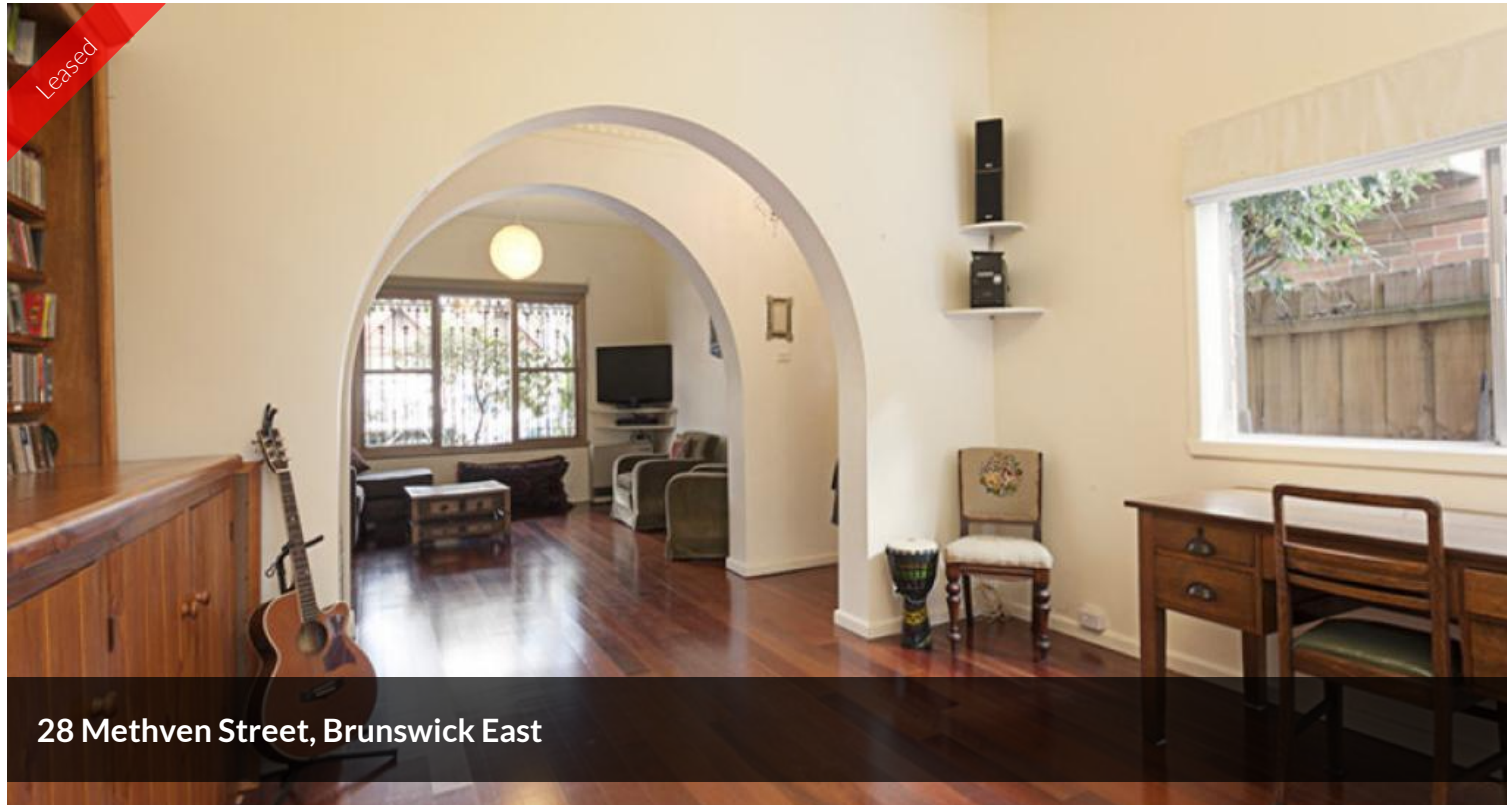
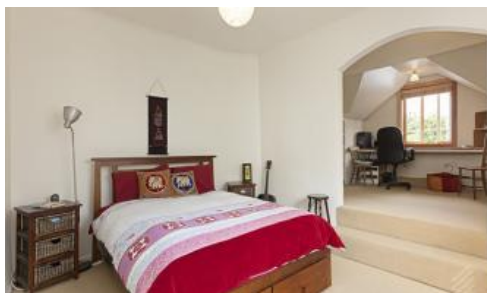


Leased



28 Methven Street, Brunswick East



CHARMING SPACIOUS HOME - PET FRIENDLY LANDLORD

Opposite Methven Park this double story, semi detached Edwardian residence offers flexible living zones, abundant sunlight and original period features. Comprises; entrance, separate lounge and formal dining, large bright kitchen with generous bench and storage, gas cooking, large oven, walk in pantry with meals area. Bathroom with shower over bath, vanity, toilet and laundry facilities. Study area or reading room looking out to rear low maintenance courtyard. Upstairs offers; spacious two tiered bedroom with robes, study area (perfect parents retreat), further two bedrooms, one with built in robe, central bathroom with shower and toilet. Other features include; high ceilings, combination of floorboards and carpeted areas, built in bookcase, reverse cycle heating and cooling in master bedroom, terrific rear paved courtyard, perfect for entertaining and large storage shed. Enviably located, on the doorstep of the thriving cosmopolitan Lygon Street East strip with trams to the CBD, easy access to freeway, Universities, Hospitals and perfectly set in this tranquil street with parkland, this property is a must on your inspection list.

The above information provided has been furnished to us by the vendor/s. We have not verified whether or not that information is accurate and do not have any belief in one way or the other in its accuracy. We do not accept any responsibility to any person for its accuracy and do no more than pass it on. All interested parties should make and rely upon their own inquiries in order to determine whether or not this information is in fact accurate.

3 2

Price	\$750 per Week
Property Type	Rental
Property ID	174

AGENT DETAILS

Tara Hore - 0399641995

OFFICE DETAILS

Melbourne
P O Box 33197 Melbourne VIC 3004
Australia
0458 440 558

